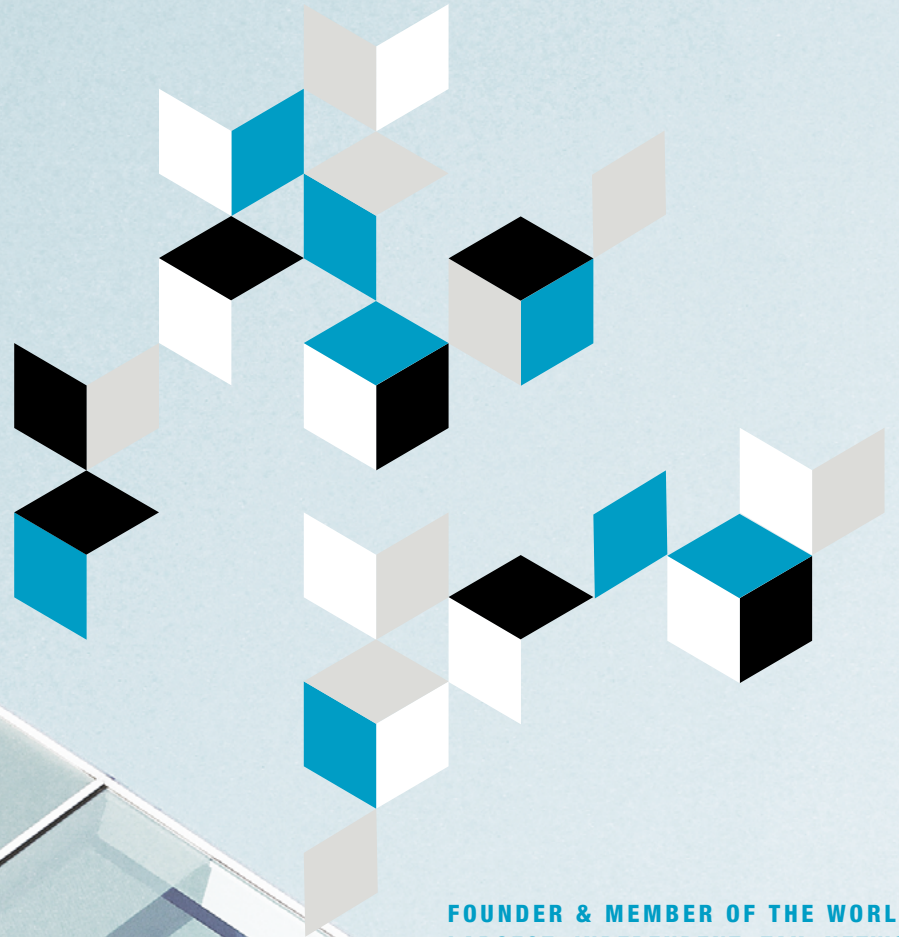


# ATOZ

TAX ADVISERS LUXEMBOURG

OUR TAILOR-MADE  
SOLUTIONS FOR YOUR BUSINESS

---



FOUNDER & MEMBER OF THE WORLD'S  
LARGEST INDEPENDENT TAX NETWORK

⋆ TAXAND

# INTERNATIONAL & CORPORATE TAX

**Luxembourg has crafted a unique position for itself in international business. The tax system reflects the openness of the economy and willingness to act as a platform for international trade and finance.**

Soparfi, SICAV, SICAR, SCSp, FCP, SA, Sàrl, securitisation vehicle, etc. It's true that the acronyms alone can be bewildering.

We pride ourselves in assisting clients in structuring their business in a manner that minimises their overall tax bill and fulfilling their compliance requirements while reaching their business goals.

We don't do tax planning in a vacuum. We work to gain an understanding of the business and any operational limits.

We then advise on tax structures that are consistent with their business objectives and are realistic in a client's operational environment.

We commit to getting involved in the implementation and maintenance to

ensure that great plans lead to great results.

Our International Tax experts advise on areas including:

- Investment funds and investment partnerships
- [Real estate investment](#)
- Private equity investment
- Transfer pricing
- Mergers and Acquisitions
- Holding and financing structures
- Substance requirements
- Intellectual property and royalty planning

Business decisions or transactions often have unintended tax consequences for clients and their companies. The Corporate Tax professionals of ATOZ provide domestic and international companies with a wide range of customised tax services that are designed to identify and mitigate the tax risks and capitalise on the opportunities which are inherent in the current complex business world.

To this effect, our Corporate Tax professionals offer the following core services:

- [Design and implementation of appropriate tax structures](#)
- [Assistance during corporate reorganisations](#)
- [Merger, demerger, sale, acquisition or disposition](#)
- [Advice on how to take full advantage of tax incentives](#)
- [Review of current tax situation to identify tax savings as well as computing the annual tax provision](#)
- [Preparation of the necessary tax returns](#)
- [Tax due diligence](#)

We are committed to the development of a healthy fiscal environment in Luxembourg, balancing the interests of the taxpayer and budgetary constraints.

We ensure that our clients comply fully with their filing and payment obligations and maintain good relationships with the relevant authorities.

[Find out more here.](#)



**JAMAL AFAKIR**

Partner, Head of International & Corporate Tax  
jamal.afakir@atoz.lu



**JEAN-MICHEL CHAMONARD**

Partner  
jean-michel.chamonard@atoz.lu



**PETYA DIMITROVA**

Partner  
petya.dimitrova@atoz.lu



**ANTOINE DUPUIS**

Partner  
antoine.dupuis@atoz.lu



**HUGUES HENAFF**

Partner  
hugues.henaff@atoz.lu



**OLIVER R. HOOR**

Partner  
oliver.hoor@atoz.lu



**KEITH O'DONNELL**

Managing Partner  
keith.odonnell@atoz.lu



**OLIVIER REMACLE**

Partner  
olivier.remacle@atoz.lu



**ROMAIN TIFFON**

Partner  
romain.tiffon@atoz.lu

WE LOOK BEYOND THE HORIZON  
TO HELP YOU PLAN TODAY  
FOR TOMORROW'S CHALLENGES

---

ATOZ  
TAX ADVISERS LUXEMBOURG



Aerogolf Center 1B, Heienhaff | L-1736 Senningerberg  
Phone (+352) 26 940-1

[www.atoz.lu](http://www.atoz.lu)

 *ATOZ Tax Advisers Luxembourg*  *@ATOZLuxembourg*  *ATOZ Community*

 *atozLuxembourg*  *ATOZ Tax Advisers Luxembourg*

 TAXAND